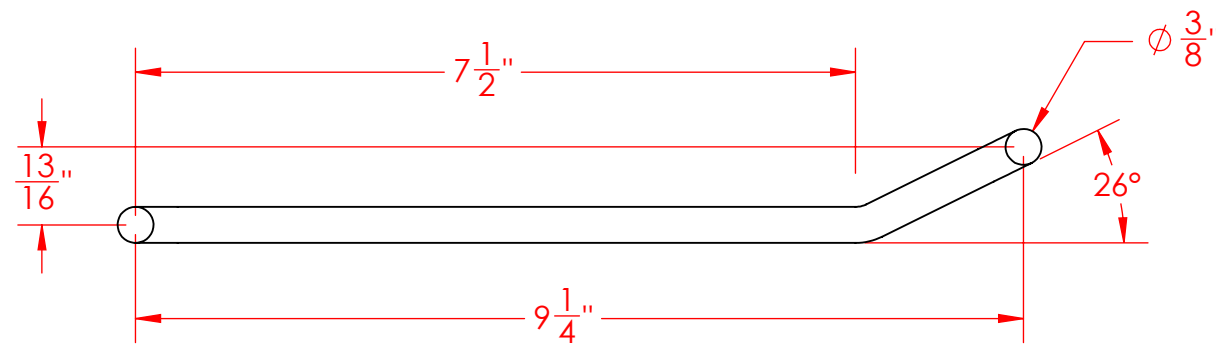
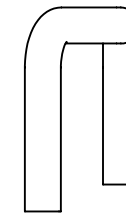
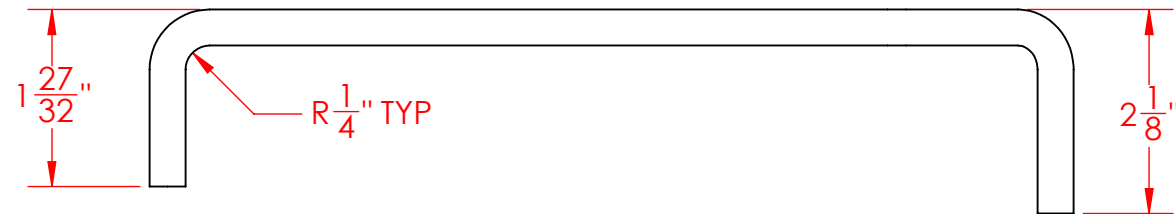
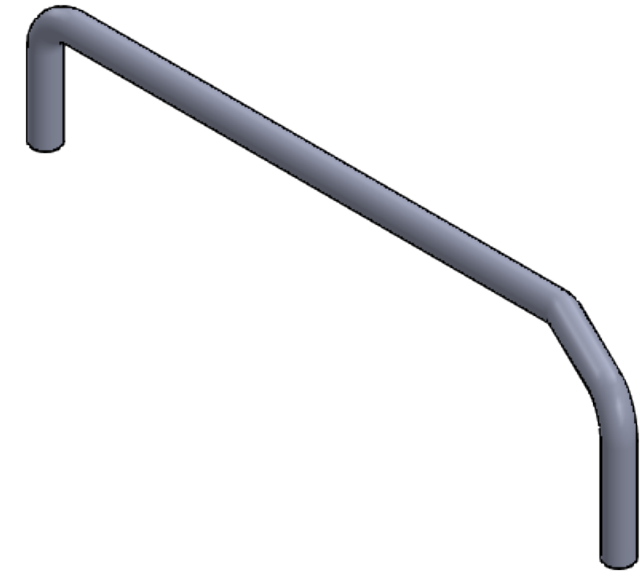
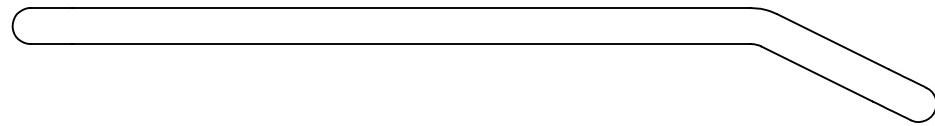

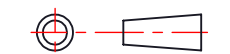


	DATE	BY	REVISION
A	03/07/07	JAB	DRAWN
B	05/22/07	ATH	1-27/32 was 2-1/8 (Drafting error)
C	05/04/11	LSE	NEW REV TO MATCH VISTA



- NOTES:
1. ROD DIAMETER IS .375 +.003/-0
 2. NOTE TOLERANCE OF +/-1/16

ESTIMATED Wt. 0.4 (lbs.)		 Three M Tool 1038 Elm Street York, PA 17403 Phone: 717-854-6379 Fax: 717-845-5232 www.ThreeMTool.com
MATERIAL: 304 SS		
FINISH: Natural		
TOLERANCES UNLESS NOTED OTHERWISE ANGLES: ± 2 DEGREES FRACTIONS ± 1/16 .X ± .125 .XX ± .063 .XXX ± .032		PART DESCRIPTION
SCALE: 1:2 SHEET 1 OF 2 <small>THE INFORMATION CONTAINED ON THIS DOCUMENT IS THE INTELLECTUAL PROPERTY OF THREE M TOOL AND MAY NOT BE COPIED OR DISCLOSED WITHOUT PRIOR WRITTEN PERMISSION FROM THREE M TOOL.</small>		CONDUCTOR ARM
THIRD ANGLE PROJECTION 		MACCABE ELECTRIC CONDUCTORS, INC.
REVISION	SHEET SIZE	PART NUMBER
C	B	MCC-07-003