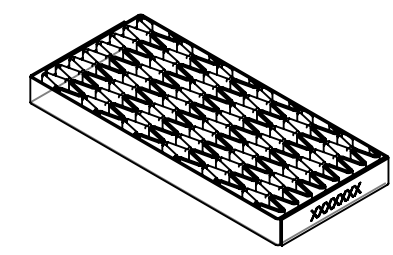
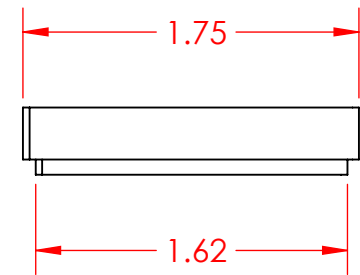
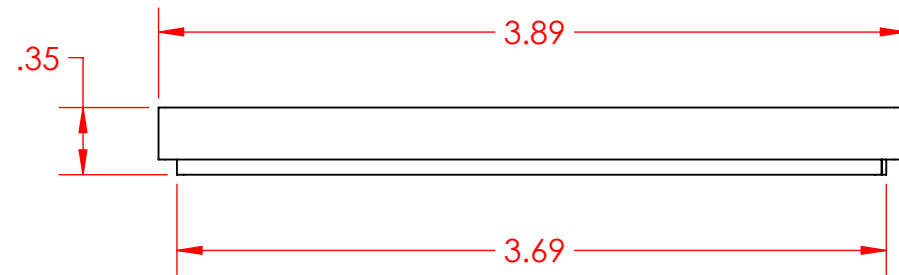
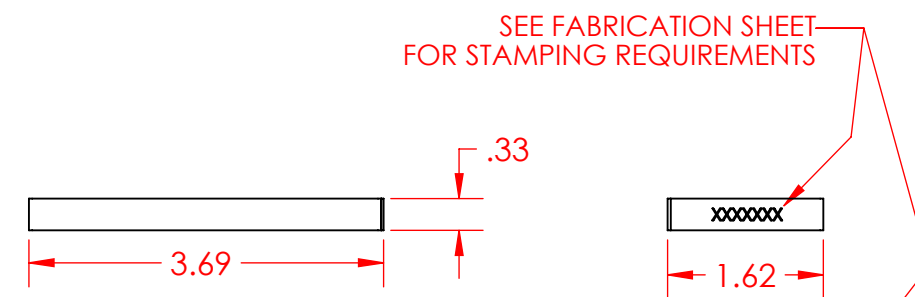


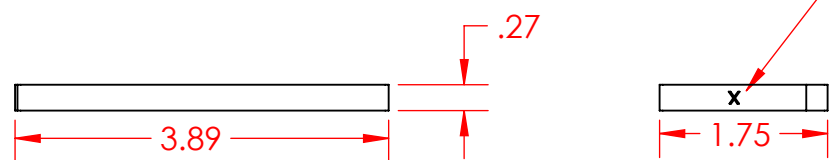
	DATE	BY	REVISION
A	4/19/13	TBD	DRAWN
B	8/29/13	TBD	BASE FRAME & LID FRAME NOW LASERCUT
C	04/08/14	FCO	CHANGED SHEET METAL FRAMES



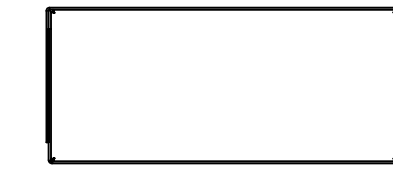
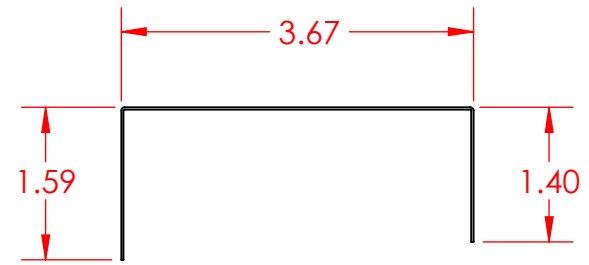
12 MESH DIVIDERS WELDED IN BASE



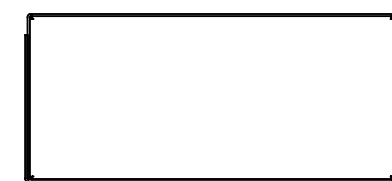
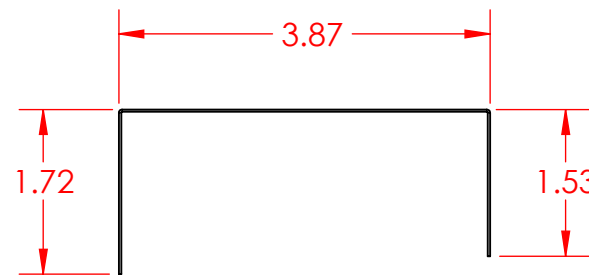
BASE FRAME HALVES
(24 GA. 316 SS)



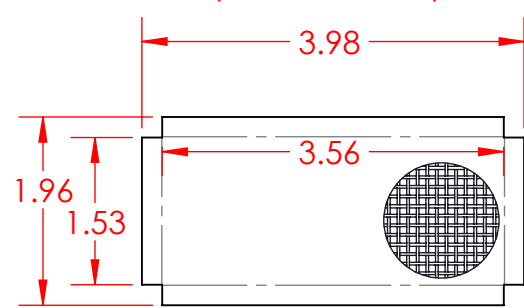
LID FRAME HALVES
(24 GA. 316 SS)



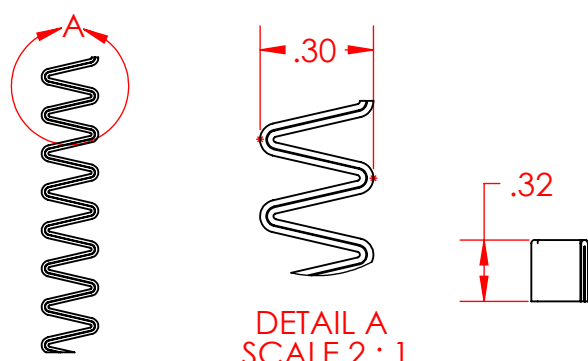
RESISTANCE WELD 2 HALVES TO
CONSTRUCT BASE FRAME



RESISTANCE WELD 2 HALVES TO
CONSTRUCT BASE FRAME



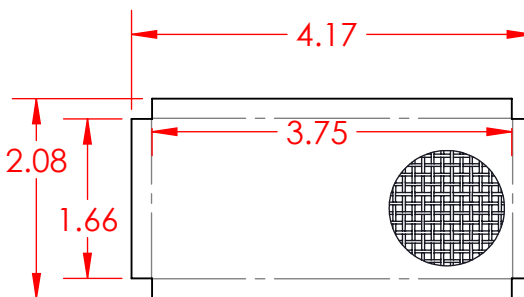
BASE MESH- 40 x .010" WOVEN
(.015" OPENINGS)



DETAIL A
SCALE 2 : 1

40 x .01" WOVEN MESH DIVIDERS

- NOTE:
1. ALL DIMENSIONS +/- .01"
 2. BASE FRAME AND LID FRAME ARE LASER CUT
 3. MATERIAL IS 316 SS
 4. FINISH IS ELECTROPOLISH WITH PASSIVATION



LID MESH- 40 x .010" WOVEN
(.015" OPENINGS)

ESTIMATED Wt. (lbs.): 0.1	
TOLERANCES UNLESS NOTED OTHERWISE ANGLES: ± 2 DEGREES FRACTIONS ± 1/16 .X ± .125 .XX ± .063 .XXX ± .032	MATERIAL: See Note FINISH: See Note
THIRD ANGLE PROJECTION	REVISION: C SHEET SIZE: B

TMT Three M Tool
1038 Elm Street
York, PA 17403
Phone: 717-854-6379
Fax: 717-845-5232
www.ThreeMTool.com

PART DESCRIPTION	
Honeycomb Extraction Tray Assembly	
Alcon Mfg.	
PART NUMBER	
ALC-040201	
SCALE: NONE	
SHEET 1 OF 1 CUSTOMER	